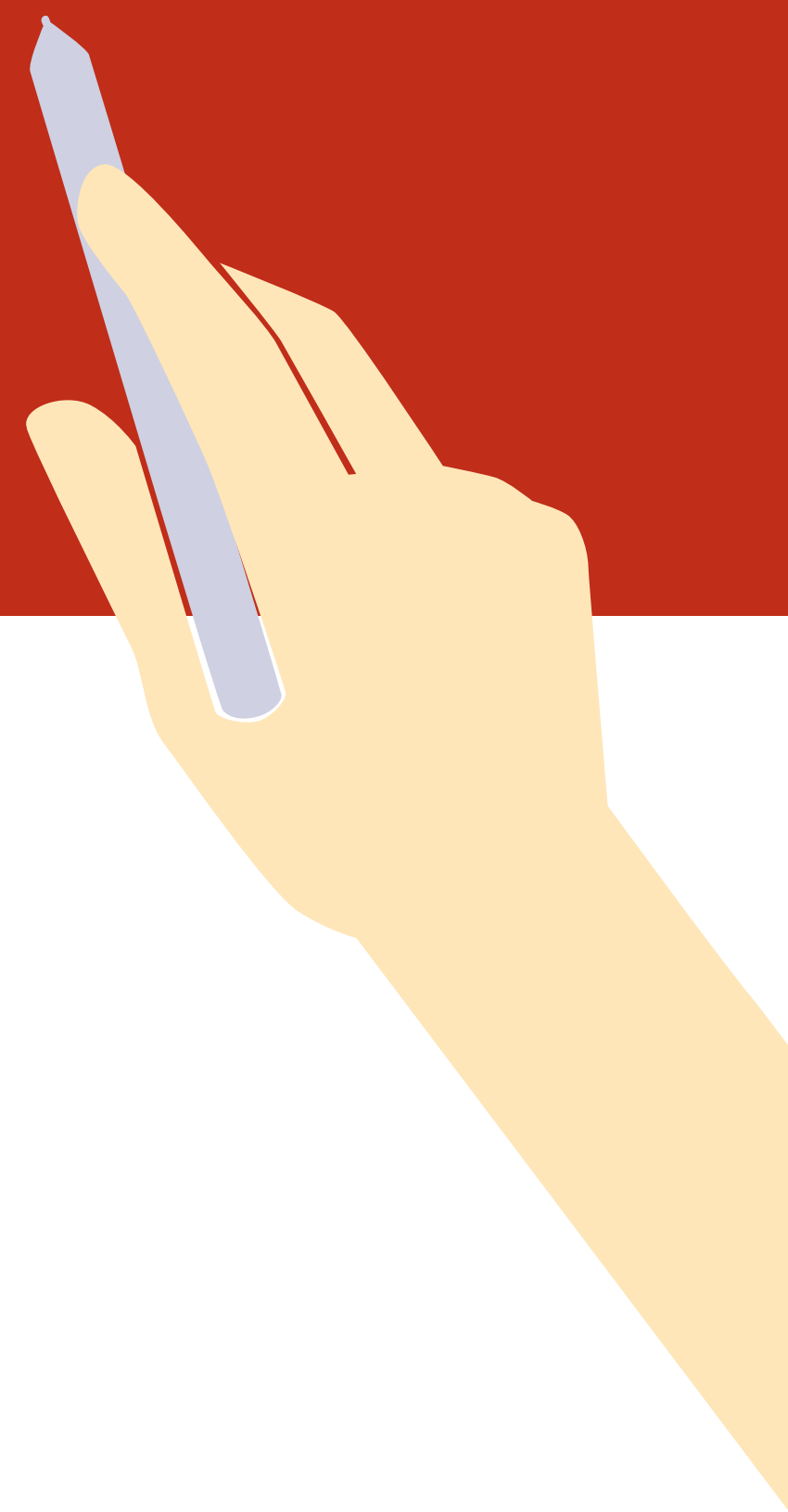


# We want to know!

How does kidney disease affect all parts of your life? Write your answer below.



**End-Stage Renal Disease  
Network of the South Atlantic**

To file a grievance, please contact us:  
IPRO End-Stage Renal Disease Network of the South Atlantic  
909 Aviation Parkway, Suite 300, Morrisville, NC 27560  
Patient Toll-Free: (800) 524-7139 • Main: (919) 463-4500  
Fax: (919) 388-9637 • E-mail: [info@nw6.esrd.net](mailto:info@nw6.esrd.net) • Web: [esrd.ipro.org](http://esrd.ipro.org)

Developed by IPRO ESRD Network of the South Atlantic while under contract with Centers for Medicare & Medicaid Services.  
Contract HHSM-500-2016-00006C